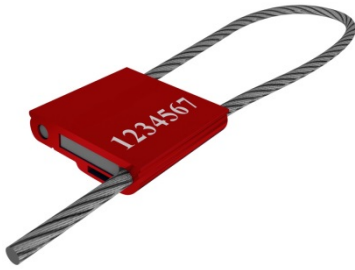




ALTA MAX LLC

I.50MM CABLE SEAL



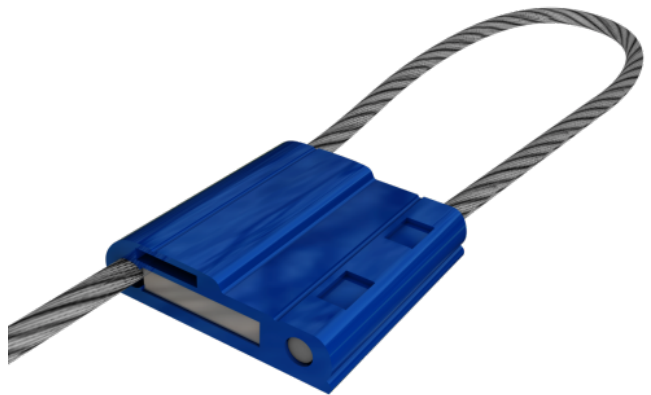
The 1.50 mm is an aluminum bodied cable seal.

Features:

- Available in eight standard colors.
- Can be customized by laser printing a name, logo, consecutive number and barcode.
- Tamper evident non-preformed steel cable unravels when cut.

Applications:

- High Value Shipments
- Trailer Door Latches
- Container Door Latches
- Bulk Tankers
- Duty Free Carts



Materials: Main Body: Aluminium alloy;
Cable: 1/16" (1.50 mm) non
preformed galvanized aircraft cable;
Internal Locking Components: Steel

Pulling Load Resistance: 727 lbs.

Body Dimensions: 1.02" x 0.87" x 0.24"

Cable: Diameter: 1/16" (1.5 mm)

Laser Printing: Name, Logo, Consecutive
Numbers, Barcode

Imprint Area: 1.02" x 0.87"

Color Options: Red, blue, green, yellow, black

Packing: 10 seals banded;
500 seals per carton

Gross Weight: 23.5 lbs

Box Dimensions: 12.2" x 10.6" x 5.5"

