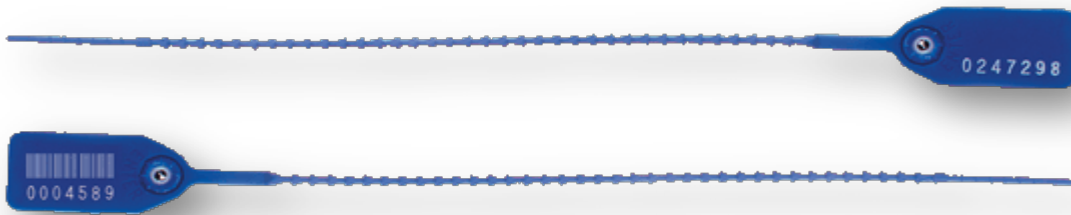




ALTA MAX LLC

BEADED PULL SEAL-LIGHT DUTY



The AMAX Light Duty Adjustable Seal is a medium strength pull-tight seal designed to be used on any equipment requiring a highly tamper-resistant locking mechanism and reasonable degree of strength.

Features:

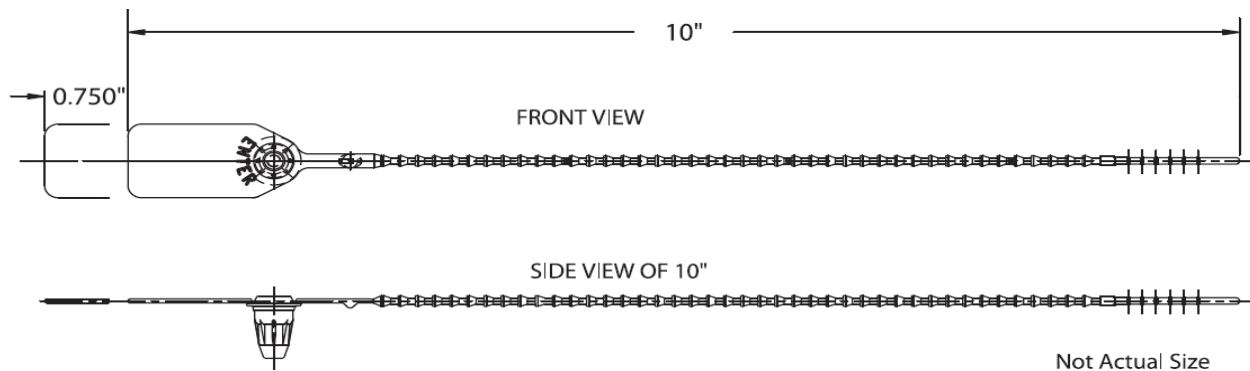
- Durable, all plastic, one-piece construction.
- Patented, tamper-resistant polyethylene locking mechanism.
- Thin, yet strong sealing strap designed to fit most locking rings and equipment latches.
- Individually numbered or barcoded and stamped with a company name or logo.

Applications:

- Inflight Service Equipment
- Tote Boxes
- ATM Cassettes
- Bulk Tanker Valves/Hatches
- Storage Cabinets

Seals shown not actual size.





Materials:

High Density Polyethylene
and Acetal

Operational length:

8" seal: 6"
10" seal: 8"

Hot Stamped Printing:

Numbering: 7 digits
Logo: 5/8" x 1"

Barcoding: Interleave 2 of 5

Packing:

10 per strip;
1,000 per carton

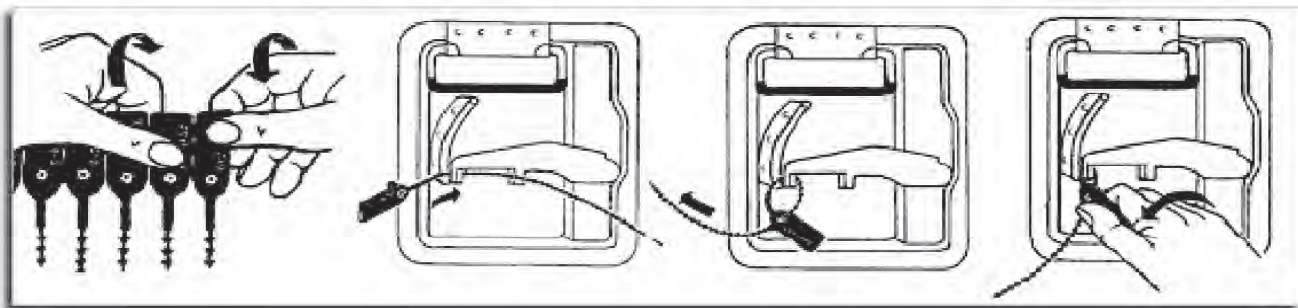
Gross Weight:

8" seal: 8 lbs. per thousand
10" seal: 8 lbs. per thousand

Box Dimensions:

10.75" x 8.75" x 10.25"

Apply and Remove



1. Hold seal strip as shown. Bend seal flag and detach from strip.
2. Insert seal strap through door latch, then through hole marked ENTER on numbered side of flag.
3. Pull strap through locking mechanism until tight.
4. Remove seal by grasping flag with thumb and twisting as shown.