

ALTA MAX LLC

BEADED PULL SEAL-LIGHT DUTY TEAR AWAY



The ALL Seal is a pull-tight seal that combines durability with ease-of-use. A patented removal feature means no tools or cutters are required to remove the seal..

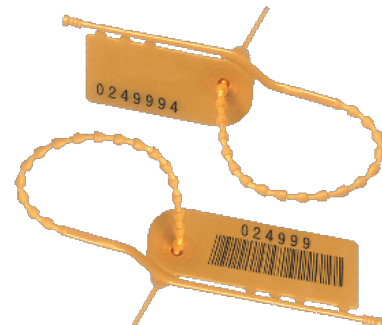
Features:

- Heavy-duty, all plastic, one-piece construction.
- Patented, tamper-resistant nylon locking mechanism.
- Patented removal system.
- Thin sealing strap designed to fit most locking rings and equipment latches.
- Individually numbered and stamped with company name or logo.

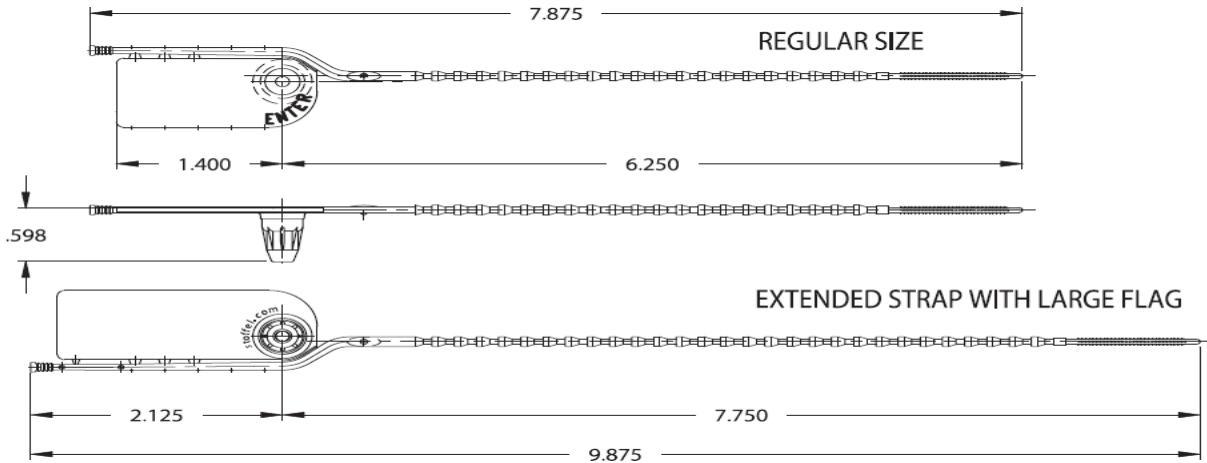
Applications:

- Inflight Service Equipment
- Pharmacy Boxes and Cabinets
- Hospital Equipment

Seals shown not actual size.



- EMS Equipment
- Storage Cabinets



Materials:

High Density Polyethylene & Acetal

Operational length:

8" seal: 5"
 10" seal: 6-3/8"

Hot Stamped Printing:

Numbering: 7 digits
 Logo: 1" x 9/16"

Barcoding:

Interleave 2 of 5,
 Code 128, Code 39

Packing:

10 per strip;
 1,000 per carton

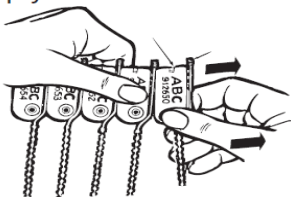
Gross Weight:

8" seal: 6 lbs. per thousand
 10" seal: 7 lbs. per thousand

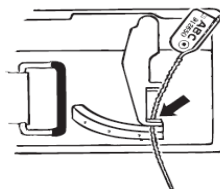
Box Dimensions:

10.5" x 10.5" x 16"

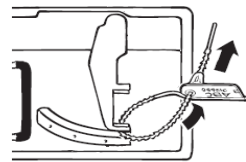
Apply and Remove



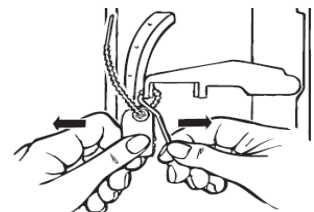
1. Hold seal strip as shown. On seal being detached, place thumb on seal tab, not the tear-off rod. Now bend seal tab and pull it apart as shown.



2. Insert bail through locking mechanism to be sealed and into locking barrel of seal.



3. Pull bail tight.



4. Remove by pulling tear-off rod away from seal tab and out of locking mechanism.