



BEADED PULL-HEAVY DUTY SEAL



This is a versatile security seal designed for use on transportation and storage equipment or anywhere a multi-locking, tamper-evident security device is needed.

Features:

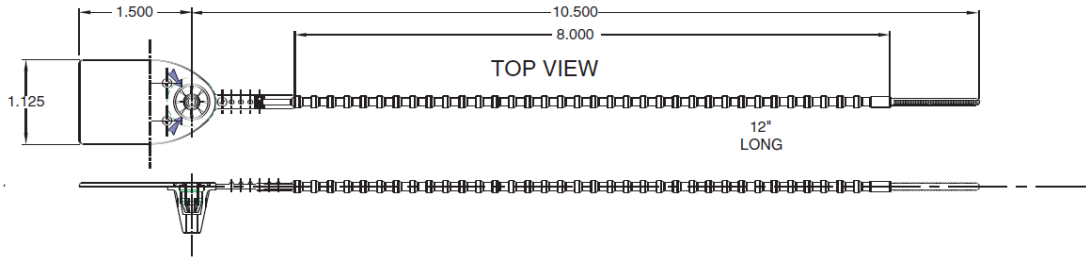
- Heavy-duty, all plastic, one-piece construction.
- Tamper-resistant acetyl locking mechanism.
- Weather resistant; withstands extremes of cold and heat.
- Individually numbered and/or printed with company name and logo.
- Matted in strips of 10 for ease of use.

Applications:

- Trailer Doors
- Bulk Tankers
- Railcars
- Tote Boxes
- Fibre Drums
- Storage Cabinets

Seals shown not actual size.





Materials: High Density Polyethylene and Acetal

Operational length:
 9" seal: 6"
 15" seal: 12"
 19" seal: 16"

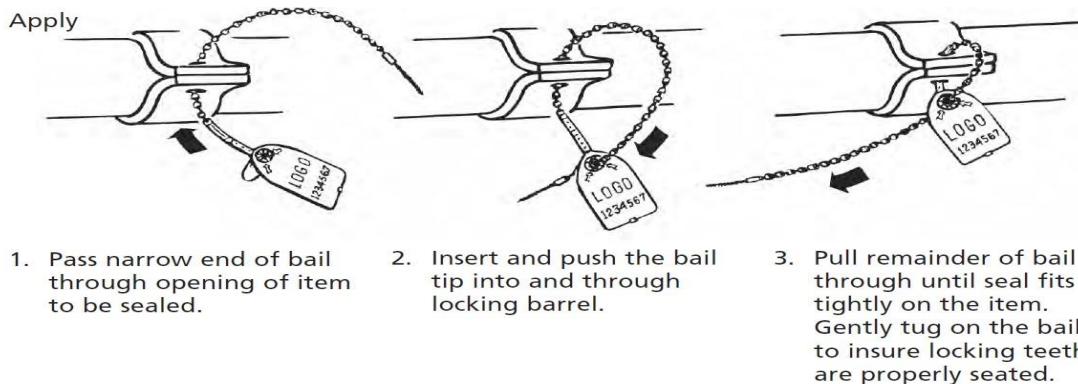
Hot Stamped Printing:
 Numbering: 7 digits
 Lettering: 3 lines of 8 characters

Barcoding: Interleave 2 of 5,
 Code 128, Code 39

Packing:
 1,000 per carton

Gross Weight:
 9" seal: 10 lbs. per thousand
 15" seal: 19 lbs. per thousand
 18" seal: 19 lbs. per thousand

Box Dimensions:
 9" seal: 14.5" x 14.5" x 12"
 15" seal: 19" x 19" x 12"
 18" seal: 19" x 19" x 12"



1. Pass narrow end of bail through opening of item to be sealed.
2. Insert and push the bail tip into and through locking barrel.
3. Pull remainder of bail through until seal fits tightly on the item. Gently tug on the bail to insure locking teeth are properly seated.